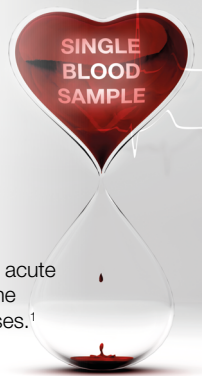


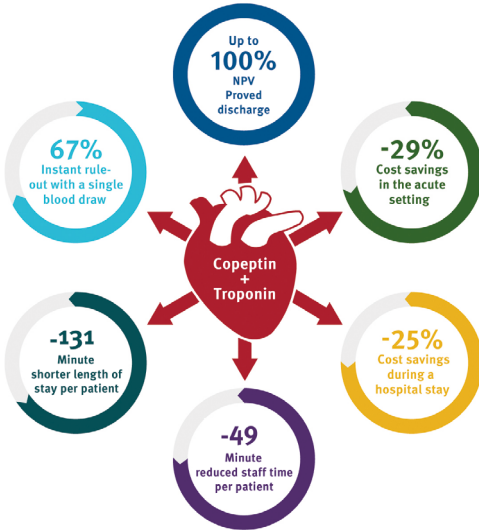
Copeptin and Troponin

Instant and safe rule-out of myocardial infarction with a single blood sample

Copeptin, is a stable and sensitive surrogate marker for circulating AVP or anti diuretic hormone (ADH). As a marker of acute endogenous stress, Copeptin is increased immediately after the onset of Acute Myocardial Infarction and then steadily decreases.¹



Clinical benefits of the dual marker strategy:²⁻⁵



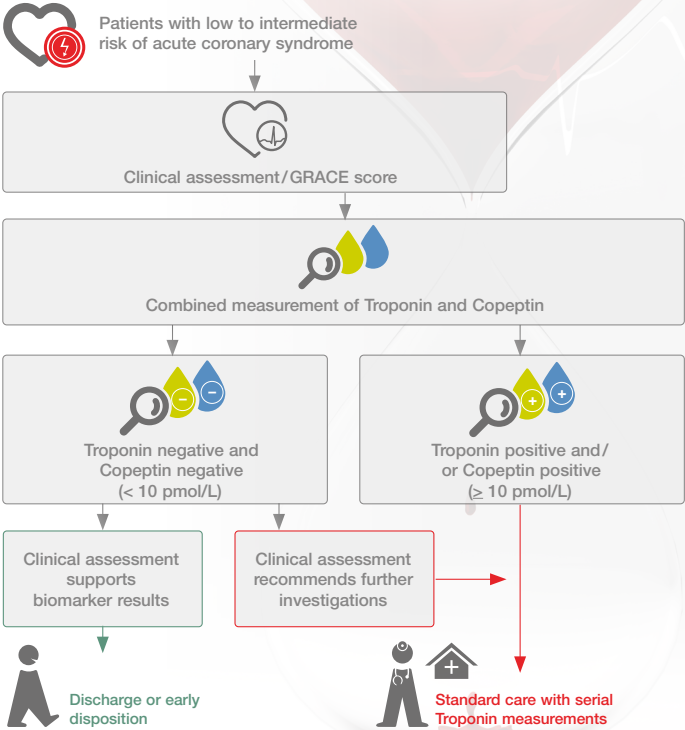
Thermo Scientific™ B-R-A-H-M-S™ Copeptin proAVP KRYPTOR combined with cardiac Troponin is currently the only strategy – based on randomized interventional trial and a large multicentre registry-supports instant and safe rule out of AMI with the first blood sample.⁶

References:

1. Morgenthaler NG et al., Clin Chem. 2006 Jan;52(1):112-9.
2. Lipinski MJ. et al., Am J Cardiol. 2014 May 1;113(9):1581-91.
3. Möckel M et al., Eur Heart J. 2015 Feb 7;36(6):369-76.
4. Roffi et al., Eur Heart J. 2016 Jan 14;37(3):267-315.
5. Reinhold T et al., PLoS ONE 13(8): e0202133.
6. Giannitsis E et al, BMJ Open 2019;9:e028311.

B·R·A·H·M·S

Copeptin proAVP KRYPTOR



modified from Möckel M and Searle J, Curr Atheroscler Rep. 2014 Jul;16(7):421.

Find out more at thermoscientific.com/copeptin

Thermo Fisher Scientific · B·R·A·H·M·S GmbH · Neuendorferstr. 25
16761 Hennigsdorf/Germany · info.copeptin@thermofisher.com

Product is CE marked but not 510(k)-cleared and not [yet] available for sale in the U.S. Availability of product in each country depends on local regulatory marketing authorization status.

© 2020 Thermo Fisher Scientific Inc. All rights reserved.
All trademarks are the property of Thermo Fisher Scientific and its subsidiaries unless otherwise specified. KRYPTOR and TRACE are trademarks of Cisbio Bioassays, licensed for use by B·R·A·H·M·S GmbH, a part of Thermo Fisher Scientific.

ThermoFisher
SCIENTIFIC